

April 29, 2015

Stewardship Commissioner
Land Use Secretariat
9th floor, Centre West Building
10035 – 108 Street Edmonton, AB T5J 3E1

Dear Mr. Blackwood:

Re: Addendum to the Variance Application for the Enbridge Norlite Diluent Pipeline Project under the Lower Athabasca Regional Plan (LARP)

In response to the April 24, 2015 Letter from the Land Use Secretariat (LUS), Enbridge is submitting this addendum to clarify all development and incidental infrastructure planned in association with the Norlite Diluent Pipeline Project (the Project) within the Gypsy-Gordon Conservation Area established by LARP.

Enbridge has proposed for the Project to pass through the Gypsy-Gordon Wildland Park Expansion Area, parallel to multiple existing linear dispositions as shown the attached figure. A variance from LARP is required in order for Enbridge to secure the necessary disposition amendment for this Project through the Conservation Area.

As described in the February 27, 2015 application for a variance to LARP, the Project involves installation and operation of a pipeline within an existing Enbridge Pipeline Agreement (PLA) disposition located in an existing undesignated corridor through the Conservation Area. The installation of the pipeline will involve various activities within the existing Enbridge PLA (PLA 110283), proposed PLA 110283 amendment area, existing dispositions held by others, and proposed Temporary Field Authorization (TFA) disposition. The key activities to occur within these areas are as follows:

Existing PLA and proposed PLA amendment

- Surveying and line locating;
- Limited tree clearing restricted to portions of the proposed PLA amendment;
- Temporary use of rig mats to access the area as required;
- Topsoil salvage and grading;
- Horizontal Directional Drill (HDD), including instream water quality monitoring at locations upstream, downstream and within the PLA;

- Stringing and welding pipe followed by trenching, lowering-in pipe and backfilling;
- Hydrostatic pressure testing of the pipe;
- Reclaiming disturbed areas; and
- Post-construction reclamation monitoring, including any supplemental reclamation enhancements as required.

Existing dispositions held by others

- Vehicle and equipment access; and
- Temporary use of rig mats as required.

TFA

- Vehicle and equipment access to river along existing cleared trail;
- Installation and removal of a temporary multi-span bridge;
- Water withdrawal from the river for HDD and hydrostatic testing purposes; and
- Instream water quality monitoring at locations upstream and downstream of the TFA during installation and removal of the temporary multi-span bridge.

The temporary multi-span bridge will be installed in summer 2015 and will be in place for approximately 6 months or less. This temporary bridge will be installed in the same location as the previous temporary bridge used during construction of the two existing Enbridge pipelines located within the corridor. No new tree clearing will be required for the bridge access. Temporary bridge abutments will be installed using a combination of rig matting and grading. Following bridge removal, contours will be re-established and the disturbance will be reclaimed in accordance with regulatory requirements and the TFA conditions.

The Federal Department of Fisheries and Oceans (DFO) has determined that a Fisheries Act authorization is not required for the Project, including the temporary multi-span bridge to be installed across the Clearwater River. The June 17, 2014 DFO letter of determination letter is attached.

Authorization from Transport Canada is no longer required under the new Navigation Protection Act to install the bridge across the Clearwater River; however, Enbridge will maintain navigability during construction of the Project as per the current legislative requirements. Enbridge will implement a public notification campaign and upstream warning system to ensure safe navigability for river users while the bridge is in place. Enbridge has consulted with the Clearwater River Heritage Society (CRHS) regarding the Project. A letter of support from CRHS was forwarded to LUS on March 27, 2015. Temporary Diversion Licences (TDLs) will be acquired under the Water Act prior to water withdrawals from the Clearwater River for HDD and hydrostatic testing purposes. Authorizations and notifications under the applicable Codes of Practice (COPs) will also be acquired or completed for the hydrostatic testing activities.

Permission from other disposition holders within the undesignated corridor will be acquired as needed prior to using portions of the existing access road located outside of PLA 110283.

Should you have any questions or concerns regarding this application please contact the undersigned at trevor.lema@enbridge.com or 780-392-4737.

Yours truly,

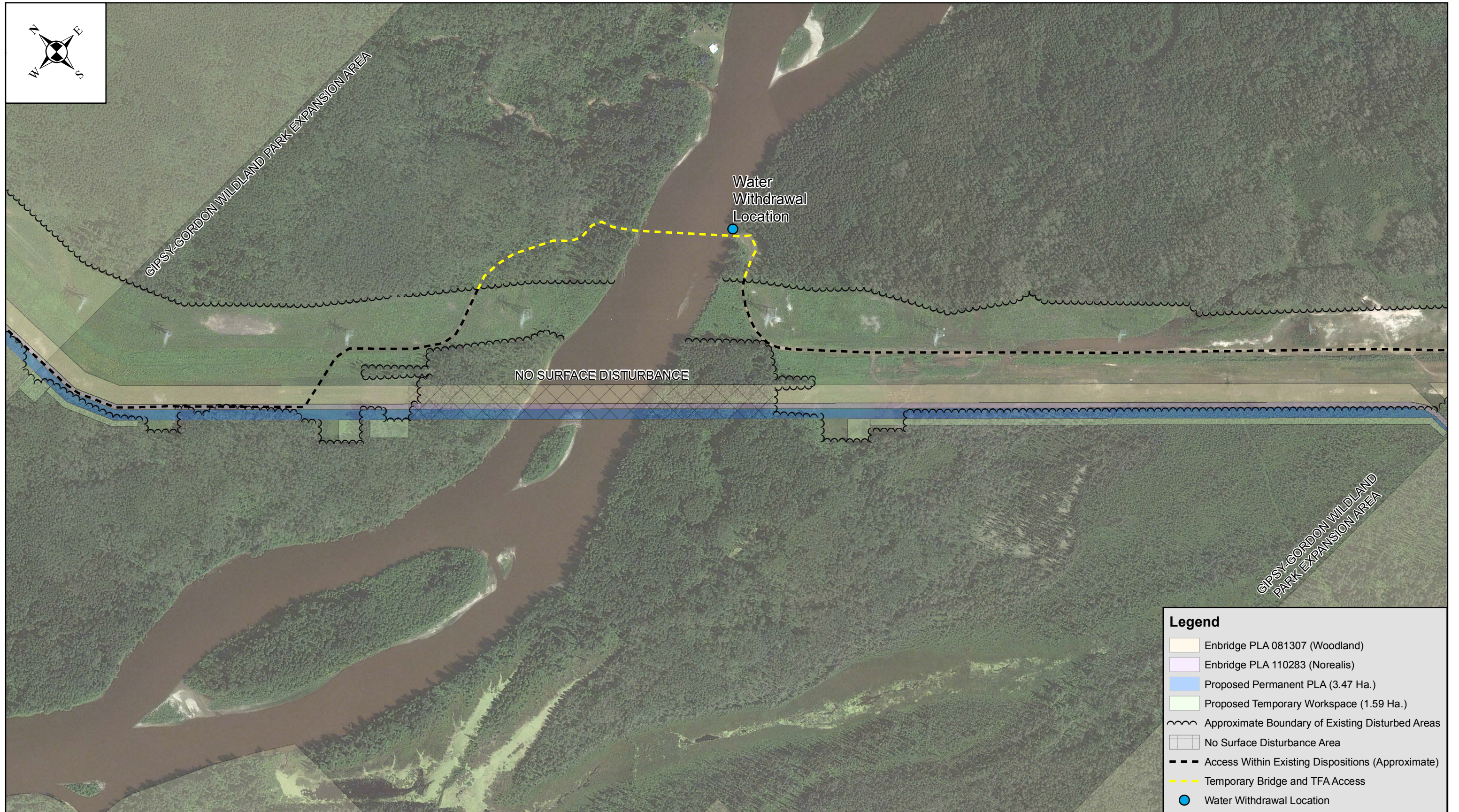


Trevor Lema
Senior Land & ROW Specialist, Land Services
Enbridge Pipelines Inc.
780-392-4737 (ph)
587-338-0208 (c)
trevor.lema@enbridge.com

incl.

Revised Figure 2: Proposed Disposition Amendment Area (revised from the February 27, 2015 application)

Determination letter from DFO dated June 17, 2014.



Legend

- Enbridge PLA 081307 (Woodland)
- Enbridge PLA 110283 (Norealis)
- Proposed Permanent PLA (3.47 Ha.)
- Proposed Temporary Workspace (1.59 Ha.)
- Approximate Boundary of Existing Disturbed Areas
- No Surface Disturbance Area
- Access Within Existing Dispositions (Approximate)
- Temporary Bridge and TFA Access
- Water Withdrawal Location

NORLITE DILUENT PIPELINE PROJECT
 Figure 2: Proposed Disposition Amendment Area

Brad Kilgour

From: Fisheries Protection <fisheriesprotection@dfo-mpo.gc.ca>
Sent: Friday, June 13, 2014 1:16 PM
To: Callie Volf
Subject: RE: Enbridge Norlite Request for Review

Ms. Volf,

Subject: Norlite Diluent Pipeline, Athabasca River and North Saskatchewan River, Northern Alberta , DFO file #: 14-HCAA-00422

The Fisheries Protection Program (the Program) of Fisheries and Oceans Canada received your proposal on April 9, 2014.

Based on the information provided, your proposal has been identified as a project where a *Fisheries Act* authorization is not required given that serious harm to fish can be avoided by following standard measures. Proposals in this category are not considered to need an authorization from the Program under the *Fisheries Act* in order to proceed. In order to comply with the Act, it is recommended that you follow our guidance tools which can be found at the following website (<http://www.dfo-mpo.gc.ca/pnw-ppe/measures-mesures/index-eng.html>). It remains your responsibility to meet the other requirements of federal, provincial and municipal agencies.

Should your plans change or if you have omitted some information in your proposal such that your proposal meets the criteria for a site specific review, as described on our website (<http://www.dfo-mpo.gc.ca/pnw-ppe/index-eng.html>), you should complete and submit the request for review form that is also available on the website.

Should you have any questions or concerns about the compliance of your proposal with the *Fisheries Act*, you may wish to engage an environmental professional familiar with measures to avoid impacts to fish and fish habitat (<http://www.dfo-mpo.gc.ca/pnw-ppe/env-pro-eng.html>).

Yours sincerely,

Jennifer Thomas
A/Team Leader, Triage and Planning
Fisheries and Oceans Canada

Fisheries and Oceans Canada has changed the way new project proposals (referrals), reports of potential Fisheries Act violations (occurrences) and information requests are managed in Central and Arctic Region (Alberta, Saskatchewan, Manitoba, Ontario, Nunavut and the Northwest Territories). Please be advised that general information regarding the management of impacts to fish and fish habitat and self-assessment tools that enable you to determine Fisheries Act requirements are available at DFO's "Working Near Water" website at www.dfo-mpo.gc.ca/pnw-ppe/index-eng.html. For all occurrence reports, or project proposals where you have determined, following self-assessment, that you cannot avoid impacts to fish and fish habitat, please submit to fisheriesprotection@dfo-mpo.gc.ca. For general inquiries you can also call 1 855 852-8320.

From: Callie Volf [mailto:Callie.Volf@enbridge.com]
Sent: 2014-May-22 4:26 PM
To: Fisheries Protection
Subject: RE: Enbridge Norlite Request for Review

Hi Emily,

For the proposed Norlite temporary multi-span bridge across the Clearwater River, Enbridge plans to mimic the design and procedure used for the previous temporary bridge installed at the same location for the Woodland Project in 2011. Enbridge received a Letter of Authorization from DFO in June 2010 for the Woodland Project which included the Clearwater bridge (File No. 09-HCAA-CA1-02620, letter attached for your reference). The abutments and piers are shown in the attached drawing. The following paragraphs describe the installation and removal process. I have included a photo of the Woodland bridge during installation as well.

The multi-span bridge will be installed and removed one span at a time with machinery working from each consecutive span. To install each span, a crane will work from the bank or previously completed span. Two piles will be driven into place individually using a weight that the crane raises and drops, essentially working like a large, slow hammer. Once the two piles of the pier are in place and cross members fastened, a prefabricated panel will be secured horizontally between the previous pier and new pier. The bridge deck section will then be secured to the panel. Once the span is complete, the crane will move forward and the process will be repeated for the next span, and so on, until the crane reaches the other side of the river.

The bridge will be removed in a reverse fashion. From the bridge deck, the crane will remove one span of the bridge deck and underlying panel at one end of the bridge, followed by the pier. When removing the pier, the cross members will be unfastened first so that the piles can be individually extracted by pulling them straight up with the crane. The crane then will back up to the next span and the process will be repeated for each span until the crane reaches the other side of the river.

I hope this information has adequately answered your questions. If you need additional information, please feel free to call me any time.

Thanks,
Callie

Callie Volf
Sr. Environmental Analyst, LP CAN Environment Projects

ENBRIDGE PIPELINES INC.
TEL: 780.969.6849 | CELL: 587.926.5899
10130 103 Street, Edmonton, AB T5J 3N9
www.enbridge.com

Integrity. Safety. Respect.

From: Fisheries Protection [mailto:fisheriesprotection@dfo-mpo.gc.ca]
Sent: Wednesday, May 07, 2014 2:14 PM
To: Callie Volf
Cc: Popowich, Ryan; Stefura, Corey
Subject: RE: Enbridge Norlite Request for Review

Hi Callie,

Thank you for the additional information. The isolated/open cut, ice bridges and clear span bridges should not cause serious harm to fish. Do you have any more information on the multi-span bridge planned for Clearwater River? I would like to know the expected footprint of the abutments and how you expect the bridge will be installed and removed? Any typical drawings would be helpful in my review.

Thank you,

Emily

Emily Morton
Fisheries Protection Program | Programme de Protection des Pêches
Fisheries and Oceans Canada | Pêches et Océans Canada
867 Lakeshore Road | 867 Chemin Lakeshore
P.O. Box 5050 | Boîte postale 5050
Burlington, ON, L7R 4A6

Tel | Tél: 905-336-4893; Fax | Téléc: 905-336-6285

Emily.Morton@dfo-mpo.gc.ca

Web site | site Web: www.dfo-mpo.gc.ca/pnw-ppe/index-eng.html Government of Canada | Gouvernement du Canada

Fisheries and Oceans Canada has changed the way new project proposals (referrals), reports of potential Fisheries Act violations (occurrences) and information requests are managed in Central and Arctic Region (Alberta, Saskatchewan, Manitoba, Ontario, Nunavut and the Northwest Territories). Please be advised that general information regarding the management of impacts to fish and fish habitat and self-assessment tools that enable you to determine Fisheries Act requirements are available at DFO's "Working Near Water" website at www.dfo-mpo.gc.ca/pnw-ppe/index-eng.html. For all occurrence reports, or project proposals where you have determined, following self-assessment, that you cannot avoid impacts to fish and fish habitat, please submit to fisheriesprotection@dfo-mpo.gc.ca. For general inquiries you can also call 1 855 852-8320.

From: Callie Volf [<mailto:Callie.Volf@enbridge.com>]

Sent: 2014-May-01 6:15 PM

To: Fisheries Protection

Cc: Popowich, Ryan; Stefura, Corey

Subject: RE: Enbridge Norlite Request for Review

Hi Emily,

Thanks for taking the time to review our application. The duration of the isolated or open-cut activities will be less than 14 days at each of the nine crossing locations. The seven ice/snowfill bridges and the two temporary clear-span bridges planned will be in place for approximately 2-4 months at each location. The temporary multi-span bridge planned for the Clearwater River will be in place for approximately 6 months.

If you need any additional information, please feel free to give me a call.

Sincerely,

Callie

From: Fisheries Protection [<mailto:fisheriesprotection@dfo-mpo.gc.ca>]
Sent: Thursday, May 01, 2014 9:54 AM
To: Stefura, Corey; ryan_popowich@golder.com
Cc: Callie Volf
Subject: RE: Enbridge Norlite Request for Review

Hi Corey and Ryan,

Thank you for submitting the Enbridge Norlite project for review. Of the 10 crossing you would like DFO to review could you please provide how long the creeks will be isolated or open-cut for, as well how long will the temporary bridges be in place.

Thank you,

Emily

Emily Morton
Fisheries Protection Program | Programme de Protection des Pêches
Fisheries and Oceans Canada | Pêches et Océans Canada
867 Lakeshore Road | 867 Chemin Lakeshore
P.O. Box 5050 | Boîte postale 5050
Burlington, ON, L7R 4A6

Tel | Tél: 905-336-4893; Fax | Téléc: 905-336-6285

Emily.Morton@dfo-mpo.gc.ca

Web site | site Web: www.dfo-mpo.gc.ca/pnw-ppe/index-eng.html Government of Canada | Gouvernement du Canada

Fisheries and Oceans Canada has changed the way new project proposals (referrals), reports of potential Fisheries Act violations (occurrences) and information requests are managed in Central and Arctic Region (Alberta, Saskatchewan, Manitoba, Ontario, Nunavut and the Northwest Territories). Please be advised that general information regarding the management of impacts to fish and fish habitat and self-assessment tools that enable you to determine Fisheries Act requirements are available at DFO's "Working Near Water" website at www.dfo-mpo.gc.ca/pnw-ppe/index-eng.html. For all occurrence reports, or project proposals where you have determined, following self-assessment, that you cannot avoid impacts to fish and fish habitat, please submit to fisheriesprotection@dfo-mpo.gc.ca. For general inquiries you can also call 1 855 852-8320.

From: Callie Volf [<mailto:Callie.Volf@enbridge.com>]
Sent: 2014-April-09 7:40 PM
To: Fisheries Protection
Cc: Brad Kilgour; Evan Tuck
Subject: Enbridge Norlite Request for Review

ATT: Fisheries Protection Program, Department of Fisheries and Oceans Canada

Attached is a Request for Review for the Enbridge Norlite Diluent Pipeline Project. An original signed hard copy will follow in the mail. If you have any question or require additional information, please contact me.

Sincerely,

Callie Volf

Sr. Environmental Analyst, LP CAN Environment Projects

ENBRIDGE PIPELINES INC.

TEL: 780-969-6849 | CELL:

10130 103 Street, Edmonton, AB T5J 3N9

www.enbridge.com

Integrity. Safety. Respect.