

- CLTP Remote Disposal Pads
- Conservation Area Public Land Use Zone
- Not Applicable
- Provincial Park Expansion
- Provincial Recreation Area
- Public Land Areas for Recreation/Tourism
- Wildland Park
- Wildland Park Expansion
- Cenovus OS Lease
- Cenovus FCCL OS Lease
- Cenovus TL ULC Lease

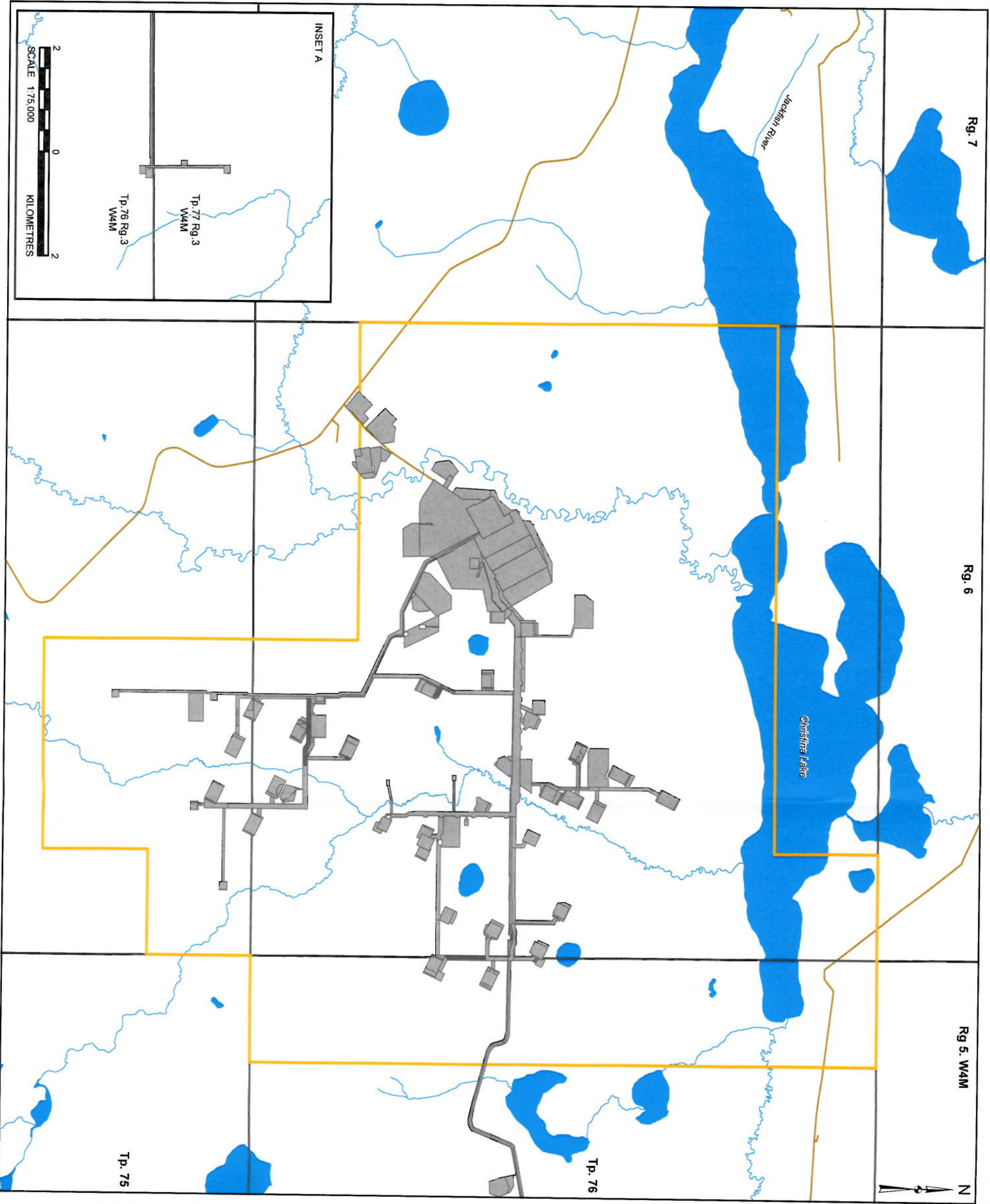
cenovus
ENERGY

**Christina Lake RD Locations
Lower Athabasca Regional Plan**

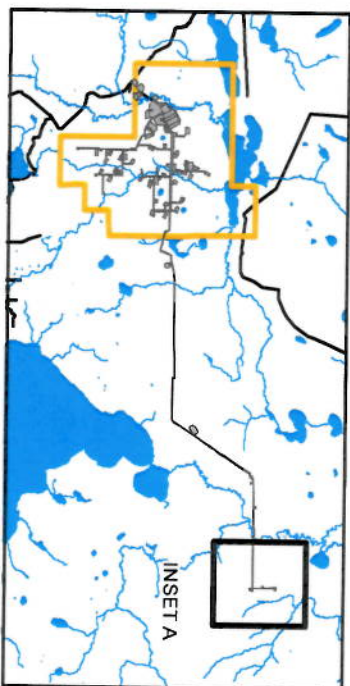
0 0.2 0.4 0.6 0.8
Kilometers
1:50,000

CVE-1270-500
 August 30, 2012
 NAD 83 UTM 12N
 Page Size: 11" x 17"

Created by: Operations Shared Services - GIS



- LEGEND**
- PUBLIC ROADWAY
 - WATERCOURSE
 - LEASE BOUNDARY
 - OPEN WATER
 - PROJECT FOOTPRINT



REFERENCE
 ALBERTA DIGITAL DATA OBTAINED FROM © GOVERNMENT OF ALBERTA
 2008. ALL RIGHTS RESERVED. IHS ENERGY INC AND CENOVUS FCCL LTD.
 (2011), USED UNDER LICENSE.
 PROJECTION: UTM ZONE 12 DATUM: NAD 83



PROJECT
cenovus
 CHRISTINA LAKE THERMAL PROJECT
 PHASES F AND G AMENDMENT

TITLE
 CHRISTINA LAKE THERMAL
 REVISED PROJECT FOOTPRINT

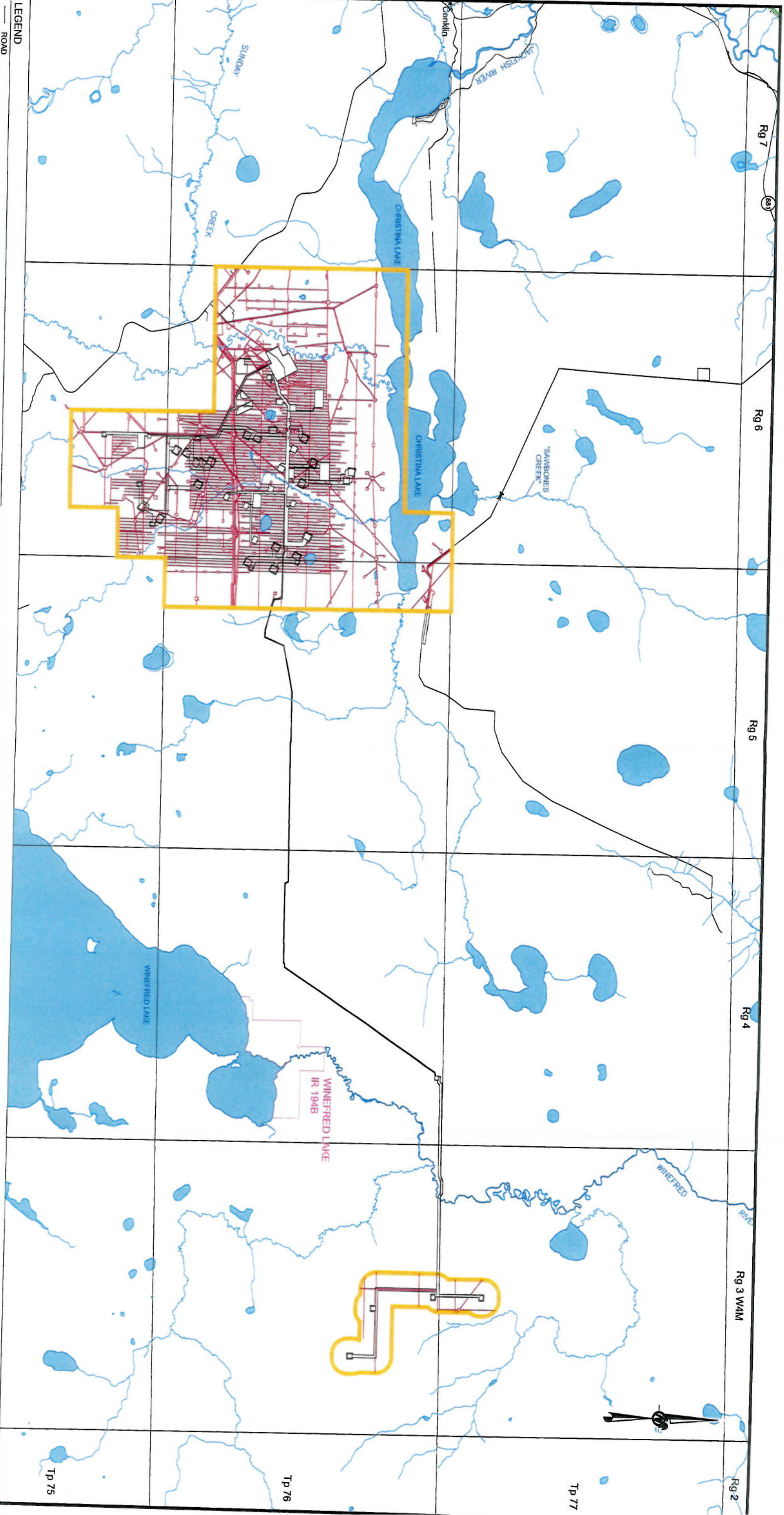
PROJECT NO.	11-1346-0025	SCALE AS SHOWN	REV. 0
DESIGN	LMB 14 Nov 2011		
CHECK	LMB 14 Nov 2011		
REVIEW	RCG 24 Nov 2011		



FIGURE: 1.2-2

NOTE
Unmanned watercourse locally known as "Sawbones Creek"

- LEGEND**
- ROAD
 - RIVER OR STREAM
 - OPEN WATER
 - INDIAN RESERVE
 - PROJECT AREA
 - PROJECT FOOTPRINT
 - EXISTING AND APPROVED FOOTPRINT



ENCANA
CHRISTINA LAKE
THERMAL EXPANSION PROJECT
PHASES 1E, 1F AND 1G

Goldier Associates
Calgary, Alberta

PROJ	06.1346.003.9000	FILE No.	0613460039000A007
DESIGN	LD 01/07/09	SCALE	AS SHOWN
CADD	TRE 17/08/09	REV.	0
CHECK	LD 18/09/09		
REVIEW	ICG 18/09/09		

FIGURE: 1.3-1