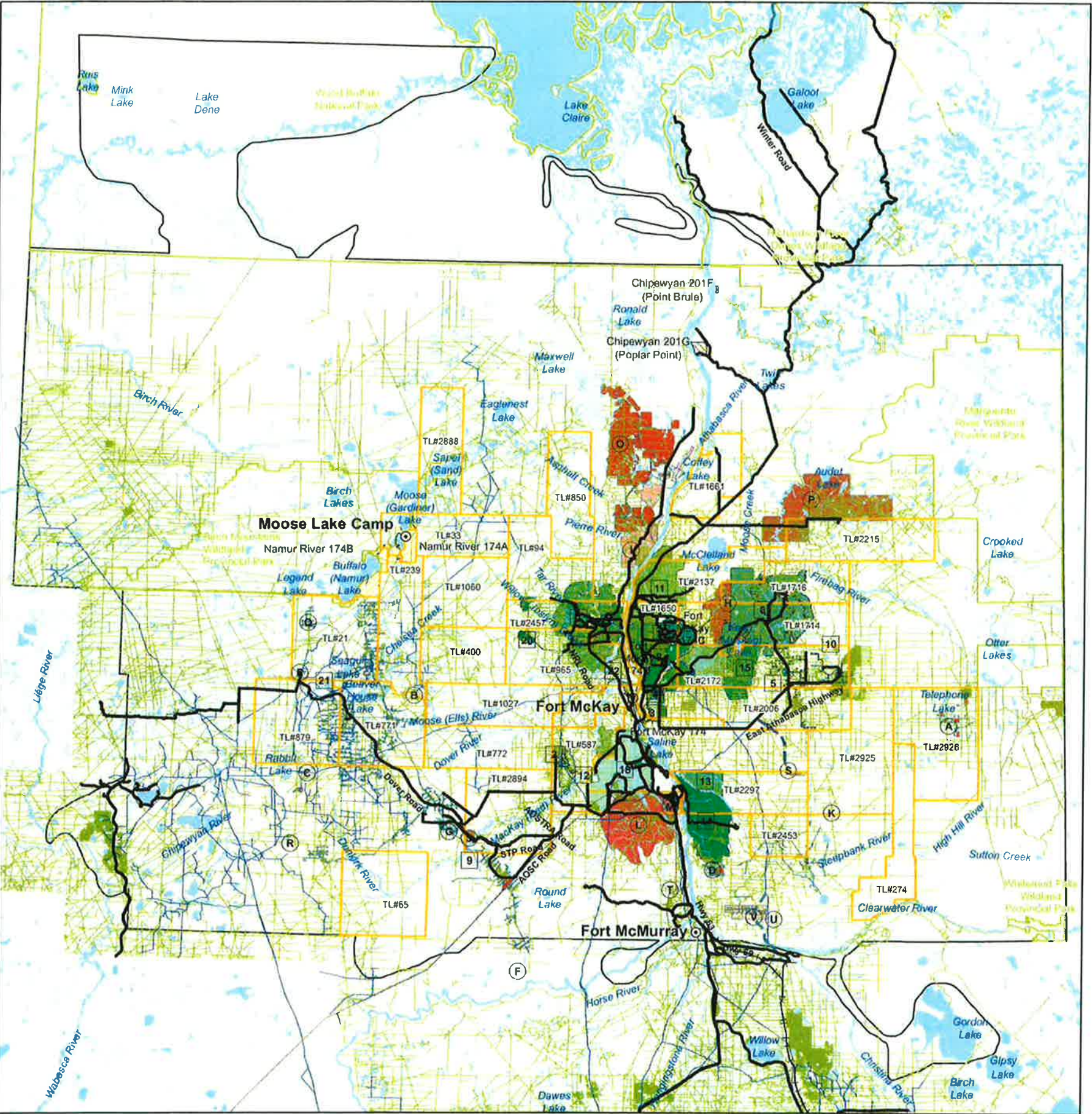


Existing, Approved and Planned Future Development in Fort McKay's Traditional Territory

Map 2-2



Legend

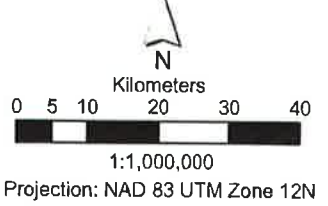
- Existing Roads
- Pipelines
- Proposed Access Road
- Transmission Lines
- Railway
- Cutlines
- Cities, Towns, Villages
- ▨ ACFN Reserves
- ▨ Fort McKay Reserves
- ▨ Fort McKay Métis Settlement
- ▨ Traplines
- ▨ Designated Parks
- ▨ Traditional Territory
- ▨ Lakes
- ▨ Streams

Existing and Approved Developments

- 1 - CNRL Horizon Project (Mine) 250,000 bpd
- 2 - Dover SAGD Vapex (SAGD)
- 3 - Hammerstone Corporation Hammerstone Project (Quarry)
- 4 - Hammerstone Corporation Muskeg Valley Quarry (Quarry)
- 5 - Husky Sunrise Thermal Project (SAGD) 210,000 bpd
- 6 - Imperial Kearl Project (Mine) 345,000 bpd
- 7 - Shell Jackpine Mine Phase 1 (Mine) 200,000 bpd
- 8 - Shell Muskeg River Mine (Mine) 155,000 bpd
- 9 - Southern Pacific McKay Pilot (SAGD) 12,000 bpd
- 10 - Suncor Firebag Project Phases 1-6 (SAGD) 368,000 bpd
- 11 - Suncor Fort Hills Oil Sands Project (Mine) 190,000 bpd
- 12 - Suncor MacKay River Expansion SAGD (SAGD) 73,000 bpd
- 13 - Suncor North Sleepbank Extension (Mine) 180,000 bpd
- 14 - Suncor Steepbank / Millenium Mine (Mine) 330,000 bpd
- 15 - Syncrude Aurora Mine South (Mine) 200,000 bpd
- 16 - Syncrude Aurora North Mine (Mine) 116,000 bpd
- 17 - Syncrude Mildred Lake Mine (Mine) 290,000 bpd
- 18 - Syncrude Mildred Lake Upgrader (Upgrader)
- 19 - Total Joslyn North Mine (Mine) 100,000 bpd
- 20 - VCI/BP Terre de Grace Pilot (SAGD) 10,000 bpd
- 21 - Sunshine Oilsands West Ells SAGD Project (SAGD) 10,000 bpd

Planned Developments

- A - Cenovus Telephone Lake Project (SAGD) 90,000 bpd
- B - Dover OPCO Commercial Project (AOSC) (SAGD) 250,000 bpd
- C - AOSC Dover West Clastics Project (SAGD) 12,000 bpd
- D - Ivanhoe Tamarack Project (SAGD) 40,000 bpd
- E - AOSC Leduc TAGD Project (TAGD) 6,000 bpd
- F - MacKay OPCO MacKay River Commercial Project (AOSC) (SAGD) 150,000 bpd
- G - Marathon Oil Birchwood SAGD Demonstration Project (SAGD) 10,000 bpd
- H - Shell Jackpine Mine Expansion (Mine) 100,000 bpd
- I - Shell Pierre River Mine Project (Mine) 200,000 bpd
- J - Southern Pacific STP McKay Thermal Phase 2 (SAGD) 24,000 bpd
- K - Suncor Lewis Project (SAGD) 80,000 bpd
- L - Suncor Voyageur South Project (Mine) 120,000 bpd
- M - Suncor Voyageur Upgrader (Upgrader)
- O - Teck Frontier Project (Mine) 277,000 bpd
- P - Total E&P Canada Northern Lights Project (Mine) 114,000 bpd
- Q - Sunshine Legend Lake (SAGD) 10,000 bpd
- R - Sunshine Thickwood (SAGD) 10,000 bpd
- S - Oak Point Lewis Project (SAGD) 1,720 bpd
- T - ET Energy Poplar Creek Project (DT-ESP) 10,000 bpd
- U - Leducor Multi-User Access Road and Bridge (Road)
- V - VCI Advanced Tri-Star (SAGD) - 75,000 bpd



Produced by: CloverPoint Cartographics
 For: Integral Ecology Group
 Cultural Data Sources: Fort McKay First Nation
 Basemap Data Sources: Government of Canada

Printing Date: Feb 11 2013
 P:\Projects\11024_IEG_TUS_Fort_McKay\Working
 \Consultation_Maps_2012\Fort_McKay_Map_2_11x17_updated_20130211.mxd