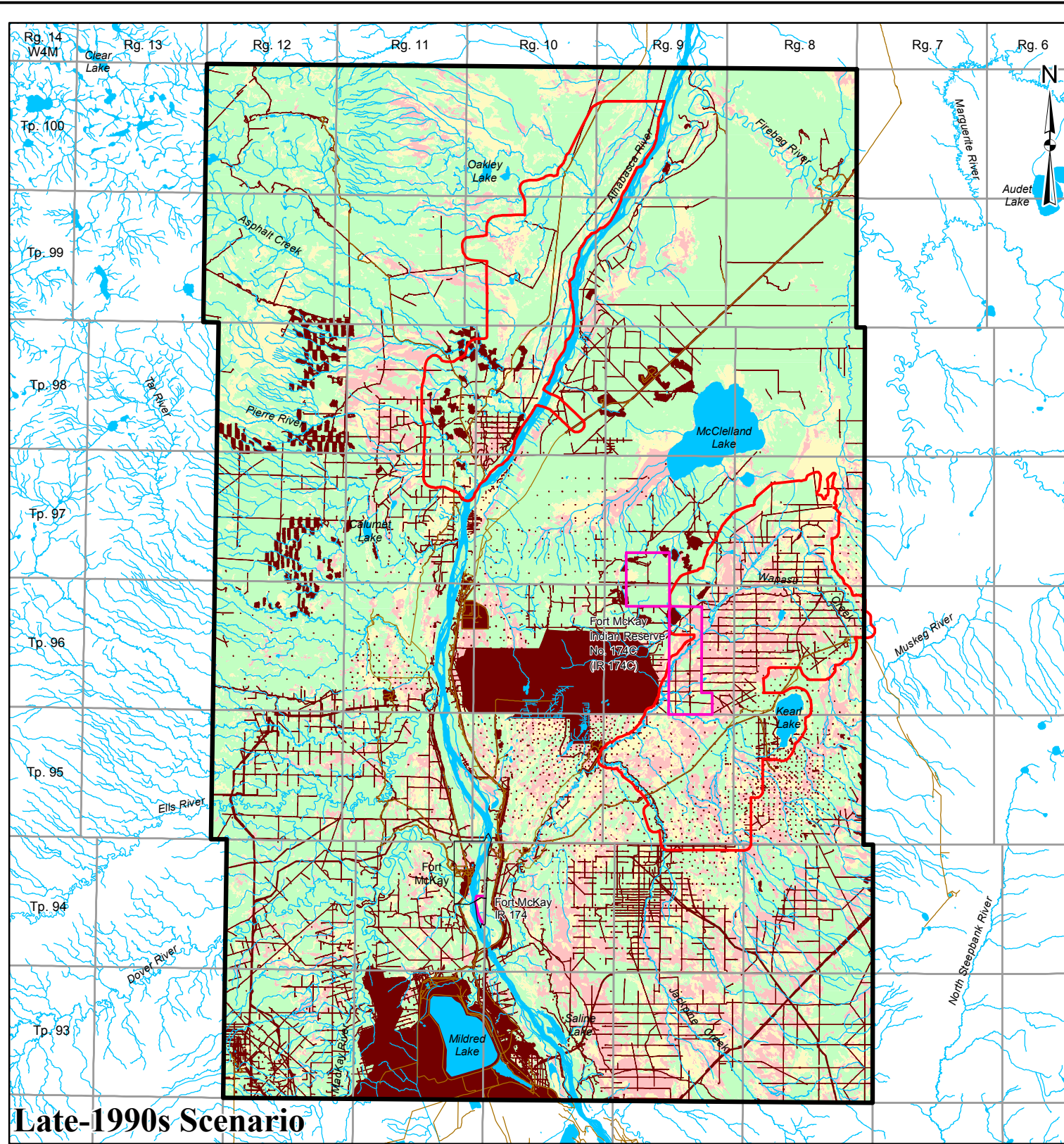
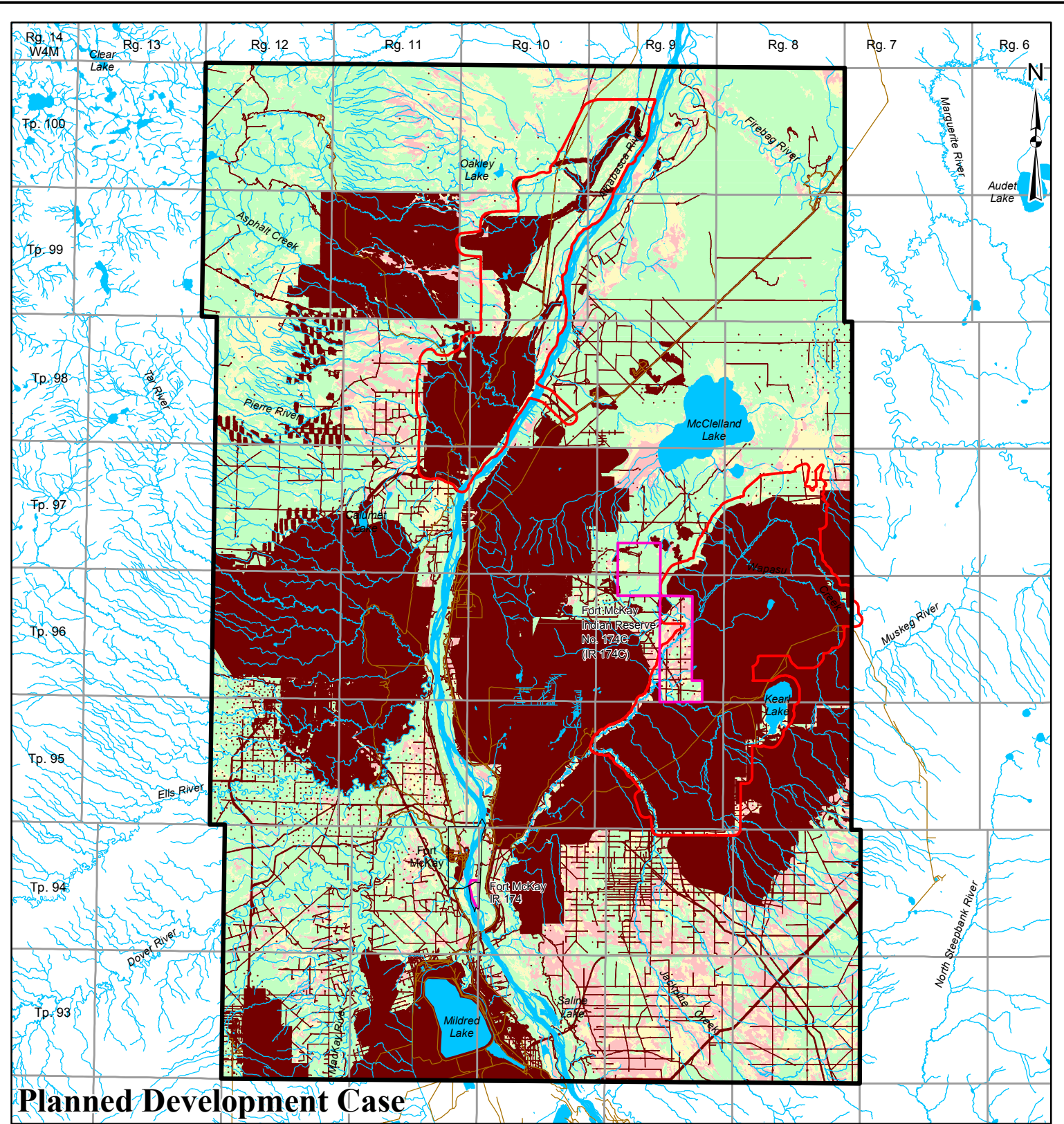


I:\CLIENTS\HELL08-1346-0006\mapping\mxd\5722\Biodiversity\AVI_90s_vs_PDC_BioPot.mxd






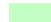






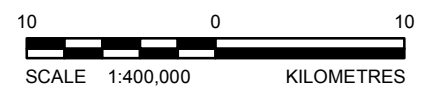
Late-1990s Scenario



Planned Development Case

LEGEND

 FORT MCKAY 40 TOWNSHIP BLOCK	 HIGH
 TERRESTRIAL LOCAL STUDY AREA	 MODERATE
 INDIAN RESERVE	 LOW
 OPEN WATER	
 PUBLIC ROADWAY	
DISTURBED	
 DISTURBANCE AREA	
 LINEAR DISTURBANCE	



REFERENCE
 Alberta digital data obtained from AltaLIS Ltd. (September 2004), IHS Energy Ltd. (August 2006), used under license.
 Projection: UTM Zone 12 Datum: NAD 83

PROJECT	JACKPINE MINE EXPANSION & PIERRE RIVER MINE PROJECT		
TITLE	BIODIVERSITY POTENTIAL IN THE FORT MCKAY 40 TOWNSHIP BLOCK (AVI)		
PROJECT No.	08-1346-0006.5722	SCALE AS SHOWN	REV. 0
DESIGN	JG 15 Jan. 2009		
GIS	JH 09 Feb. 2009		
CHECK	MJ 27 Feb. 2009		
REVIEW	TC 02 Mar. 2009		

FIGURE 8-2