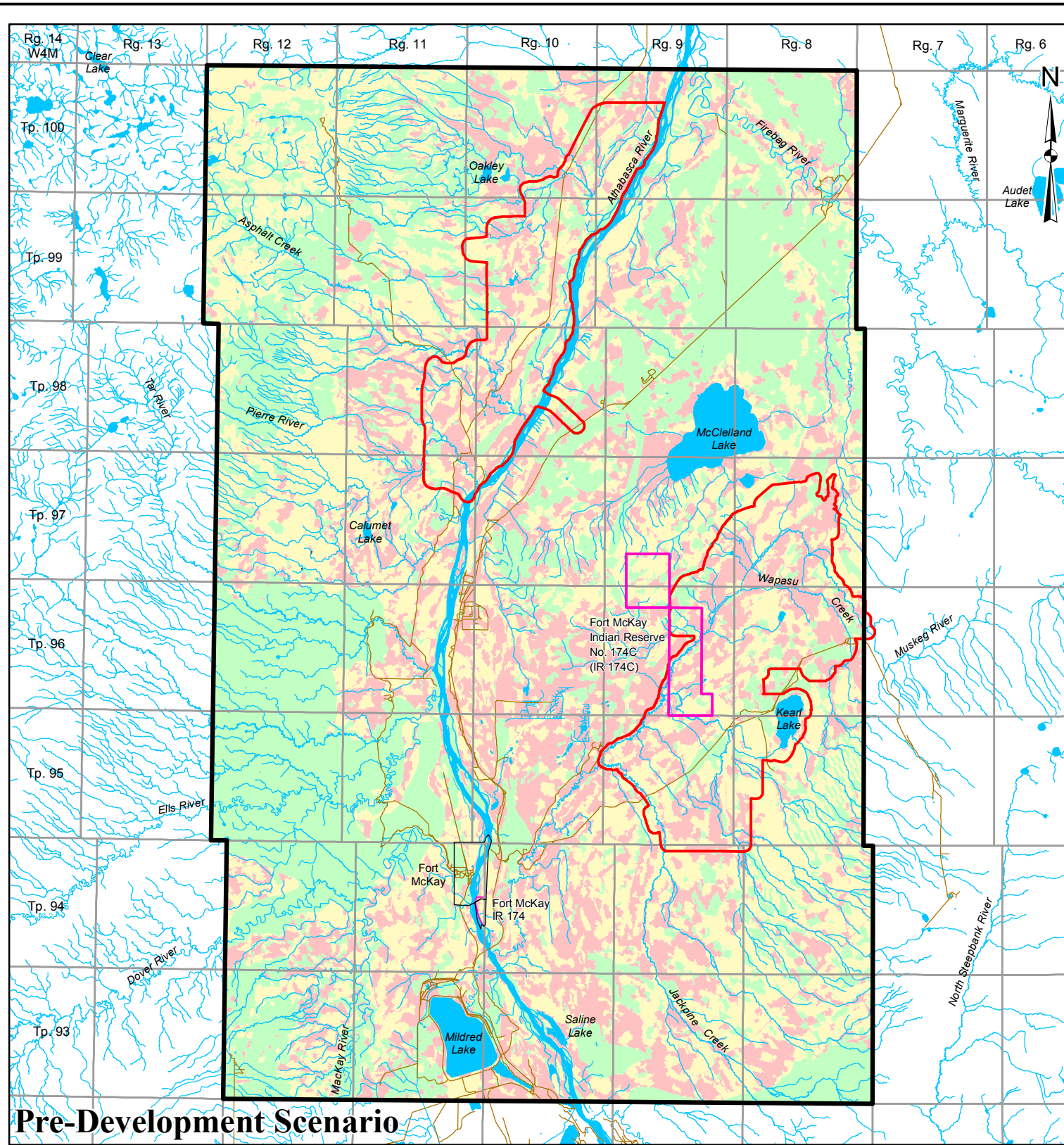
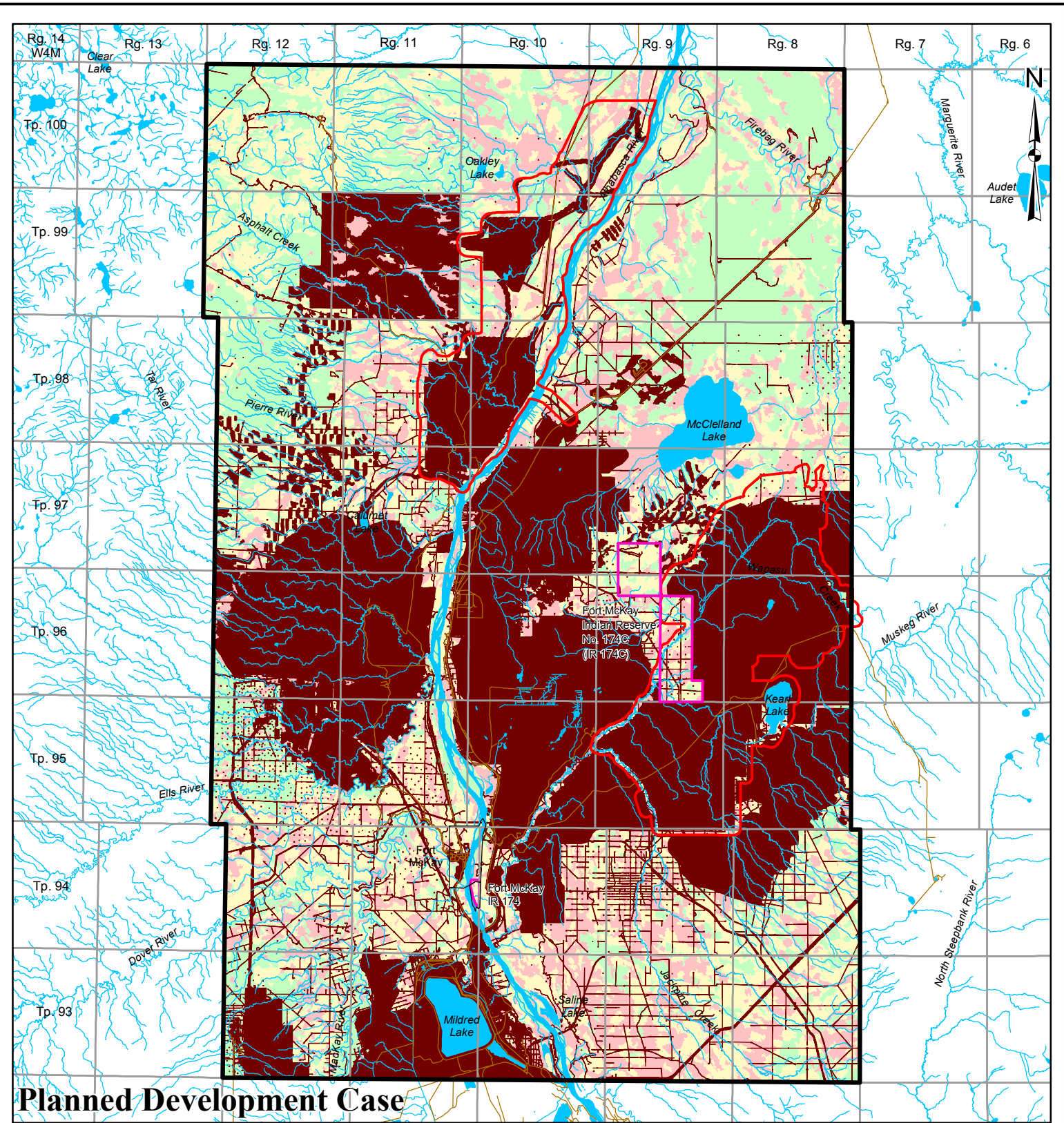


I:\CLIENTS\HELL 08-1346-0006\mapping\mxd\5722\Biodiversity\RLCC_PreDev_vs_PDC_BioPot.mxd








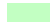





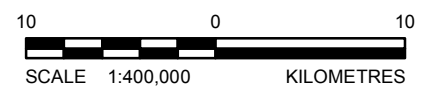
Pre-Development Scenario



Planned Development Case

LEGEND

 FORT MCKAY 40 TOWNSHIP BLOCK	 BIODIVERSITY POTENTIAL
 TERRESTRIAL LOCAL STUDY AREA	 HIGH
 INDIAN RESERVE	 MODERATE
 OPEN WATER	 LOW
 PUBLIC ROADWAY	
DISTURBED	
 DISTURBANCE AREA	
 LINEAR DISTURBANCE	



REFERENCE
 Alberta digital data obtained from AltaLIS Ltd. (September 2004), IHS Energy Ltd. (August 2006), used under license.
 Projection: UTM Zone 12 Datum: NAD 83

PROJECT	JACKPINE MINE EXPANSION & PIERRE RIVER MINE PROJECT		
TITLE	BIODIVERSITY POTENTIAL IN THE FORT MCKAY 40 TOWNSHIP BLOCK (LANDSAT)		
	PROJECT No. 08-1346-0006.5722	SCALE AS SHOWN	REV. 0
	DESIGN JG 15 Jan. 2009	FIGURE 8-1	
	GIS JH 09 Feb. 2009		
	CHECK MJ 27 Feb. 2009		
	REVIEW TC 02 Mar. 2009		