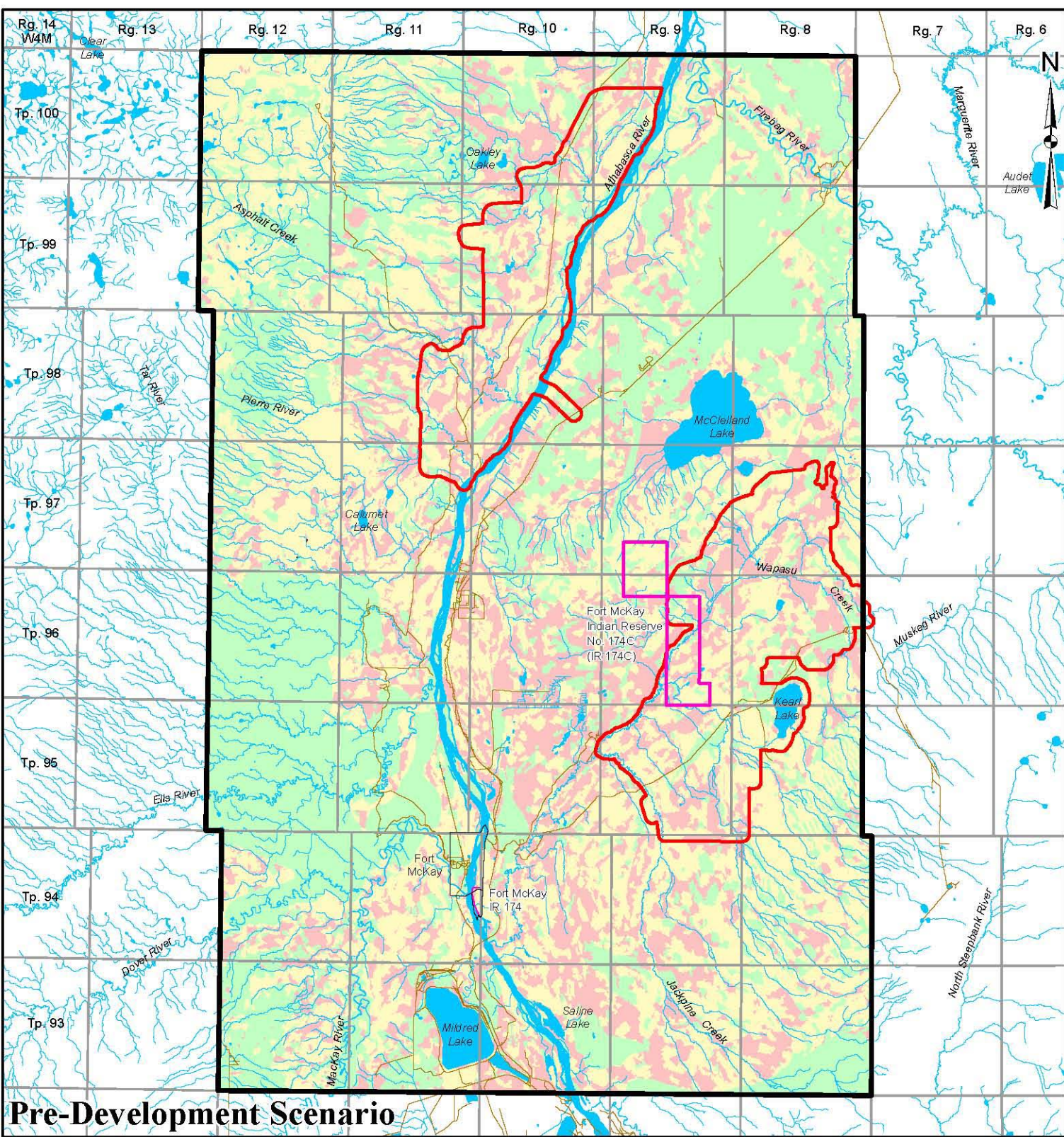
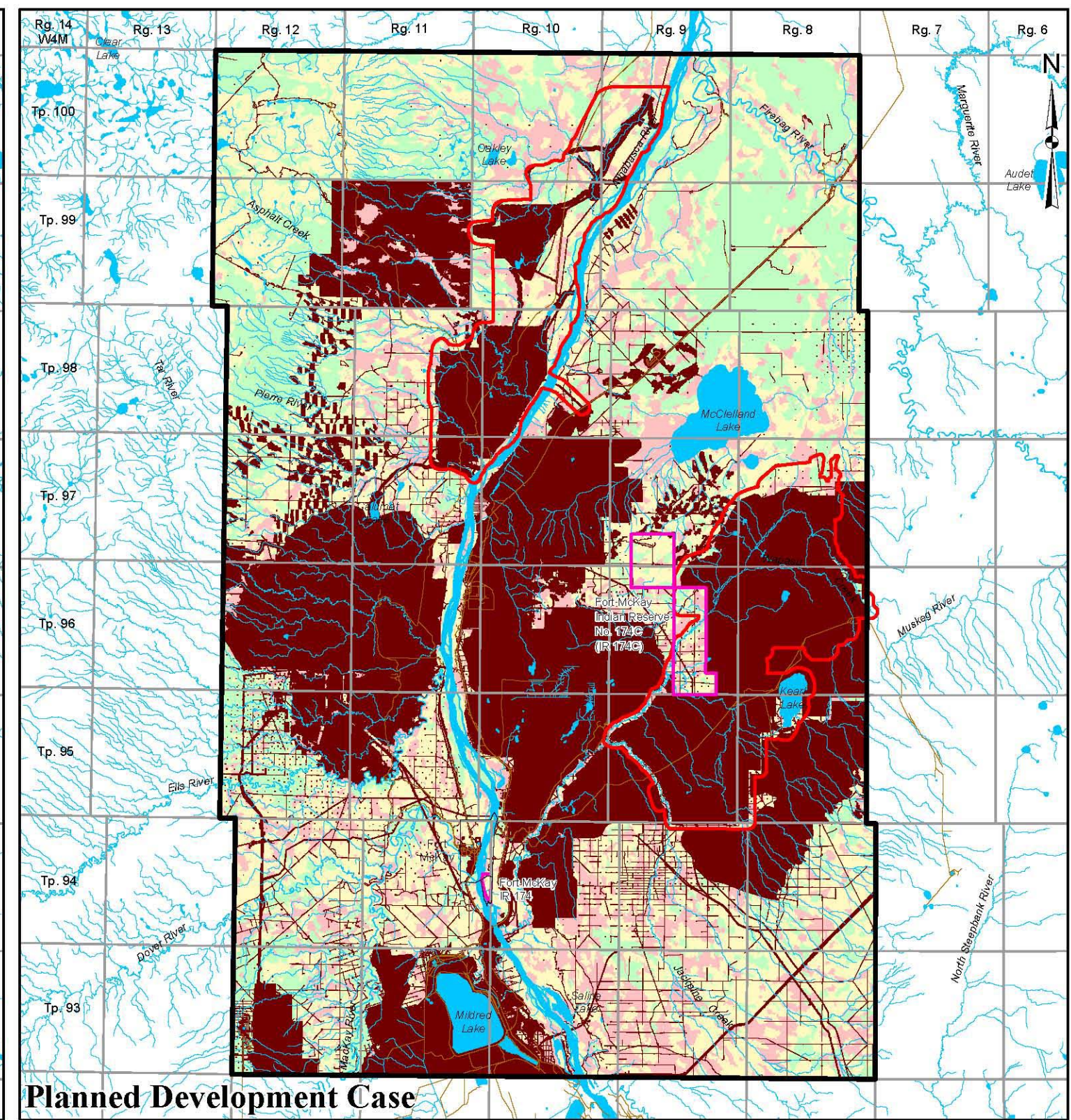


I:\CLIENT\SHELL\08-1346-0006\mapping\mxd\5722\Biodiversity\RLCC_PreDev_vs_PDC_BioPot.mxd



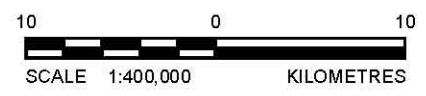
Pre-Development Scenario



Planned Development Case

LEGEND

| | |
|------------------------------|-------------------------------|
| FORT MCKAY 40 TOWNSHIP BLOCK | BIODIVERSITY POTENTIAL |
| TERRESTRIAL LOCAL STUDY AREA | HIGH |
| INDIAN RESERVE | MODERATE |
| OPEN WATER | LOW |
| PUBLIC ROADWAY | |
| DISTURBED | |
| DISTURBANCE AREA | |
| LINEAR DISTURBANCE | |



REFERENCE
 Alberta digital data obtained from AltaLIS Ltd. (September 2004), IHS Energy Ltd. (August 2006), used under license.
 Projection: UTM Zone 12 Datum: NAD 83

| | | | |
|---------|---|----------------|--------|
| PROJECT | JACKPINE MINE EXPANSION & PIERRE RIVER MINE PROJECT | | |
| TITLE | BIODIVERSITY POTENTIAL IN THE FORT MCKAY 40 TOWNSHIP BLOCK (LANDSAT) | | |
| | PROJECT No. 08-1346-0006.5722 | SCALE AS SHOWN | REV. 0 |
| | DESIGN JG 15 Jan. 2009 | | |
| | GIS JH 09 Feb. 2009 | | |
| | CHECK MJ 27 Feb. 2009 | | |
| | REVIEW TC 02 Mar. 2009 | | |

FIGURE 8-1