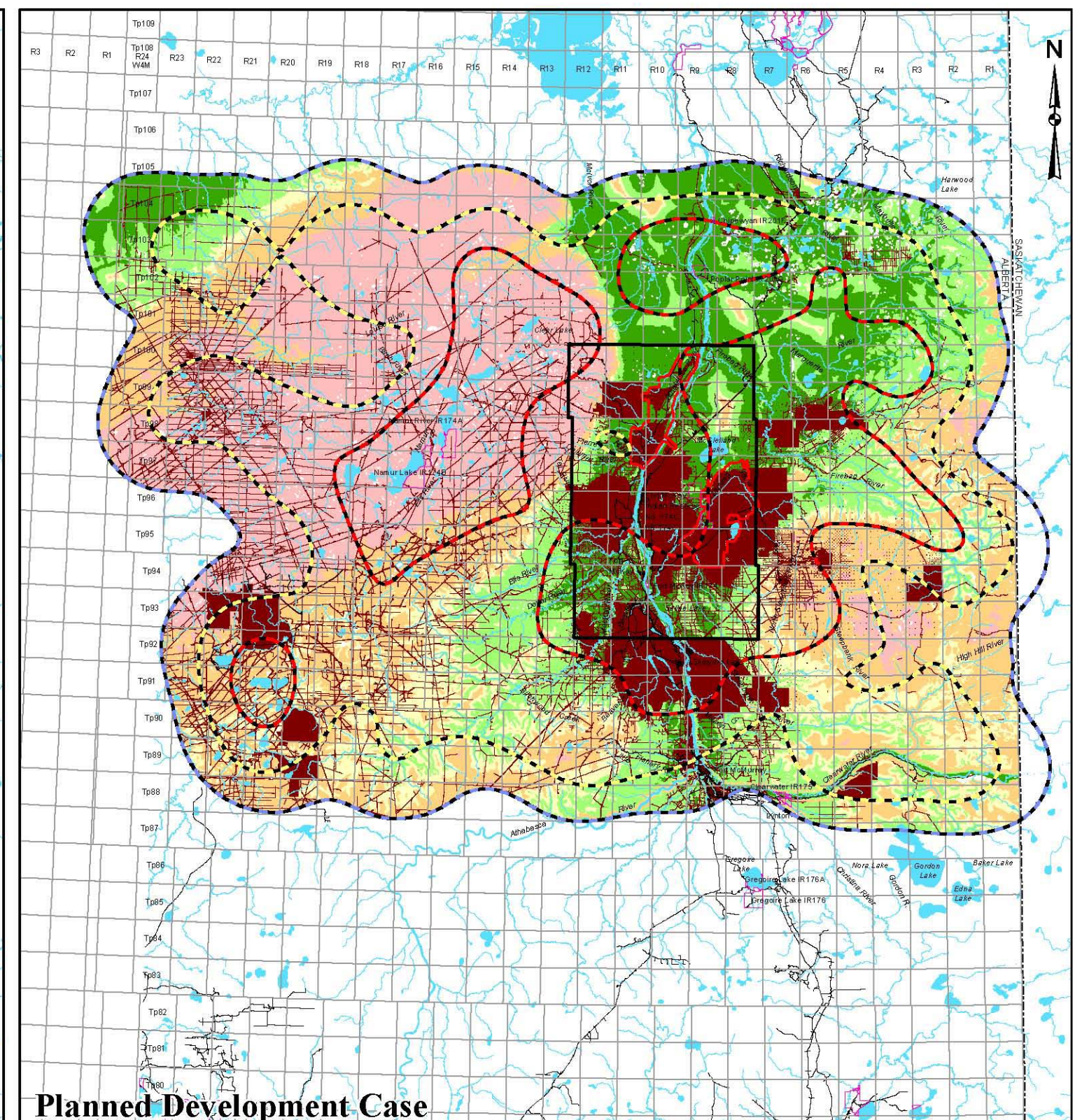


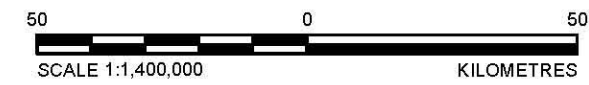
**Pre-Development Scenario**



**Planned Development Case**

**LEGEND**

FORT MCKAY 40 TOWNSHIP BLOCK	TERRESTRIAL LOCAL STUDY AREA	INDIAN RESERVE	PROVINCIAL BORDER	OPEN WATER	PUBLIC ROADWAY	RAILROAD
DISTURBED	DISTURBANCE AREA	LINEAR DISTURBANCE	<b>CULTURALLY SIGNIFICANT ECOSYSTEM (CSE) AREA</b>			
				INTENSE USE CSE (50% UTILIZATION DISTRIBUTION)		
				MODERATE USE CSE (75% UTILIZATION DISTRIBUTION)		
				LOW USE CSE (95% UTILIZATION DISTRIBUTION)		
<b>HABITAT SUITABILITY</b>				HIGH	MODERATE HIGH	MODERATE
				MODERATE LOW	LOW	NIL
				CLOUD - NO DATA		



**REFERENCE**  
 Alberta digital data obtained from AltaLIS Ltd. (September 2004), IHS Energy Ltd. (August 2006), used under license.  
 Projection: UTM Zone 12 Datum: NAD 83

PROJECT	JACKPINE MINE EXPANSION & PIERRE RIVER MINE PROJECT		
TITLE	CANADA LYNX HABITAT SUITABILITY IN THE FUR BEARER CULTURALLY SIGNIFICANT ECOSYSTEM AREA		
PROJECT No.	08-1346-0006.5722	SCALE AS SHOWN	REV. 0
DESIGN	BDW	13 Jan. 2009	<b>FIGURE 6-5</b>
GIS	JH	06 Mar. 2009	
CHECK	AR	06 Mar. 2009	
REVIEW	WS	06 Mar. 2009	

I:\CLIENTS\SHELL\08-1346-0006\map\mg\msd\5722\RSF\Fort\_Mckay\_rsa\_hsi.lyrx.mxd