



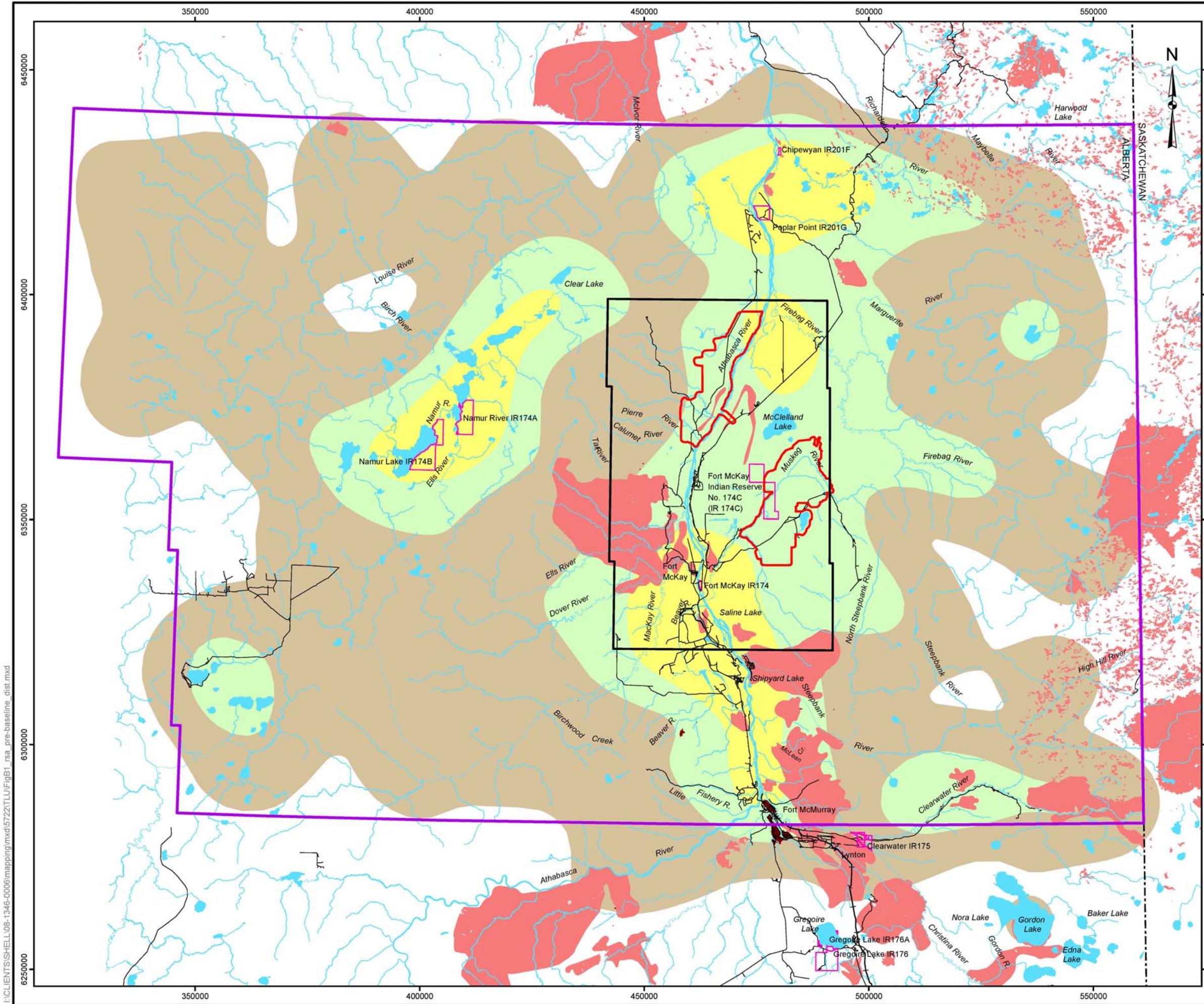
ACCESS AND DISTURBANCE

Fort McKay Specific Assessment

Appendix 9-1 Disturbance Scenario Cases Maps

**Fort McKay
Industry Relations Corporation**

March 2010



LEGEND

- TERRESTRIAL LOCAL STUDY AREA
- FORT MCKAY 40 TOWNSHIP BLOCK
- FORT MCKAY TRADITIONAL USE AREA
- INDIAN RESERVE
- PROVINCIAL BORDER
- OPEN WATER
- PUBLIC ROADWAY
- RAILROAD

CULTURALLY SIGNIFICANT ECOSYSTEMS AREA (ALL USES)

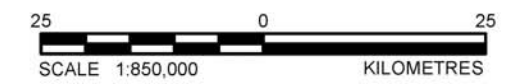
- INTENSE USE CSE (50% UTILIZATION DISTRIBUTION)
- MODERATE USE CSE (75% UTILIZATION DISTRIBUTION)
- LOW USE CSE (95% UTILIZATION DISTRIBUTION)

DISTURBED

- DISTURBANCE
- FIRE
- LINEAR DISTURBANCE

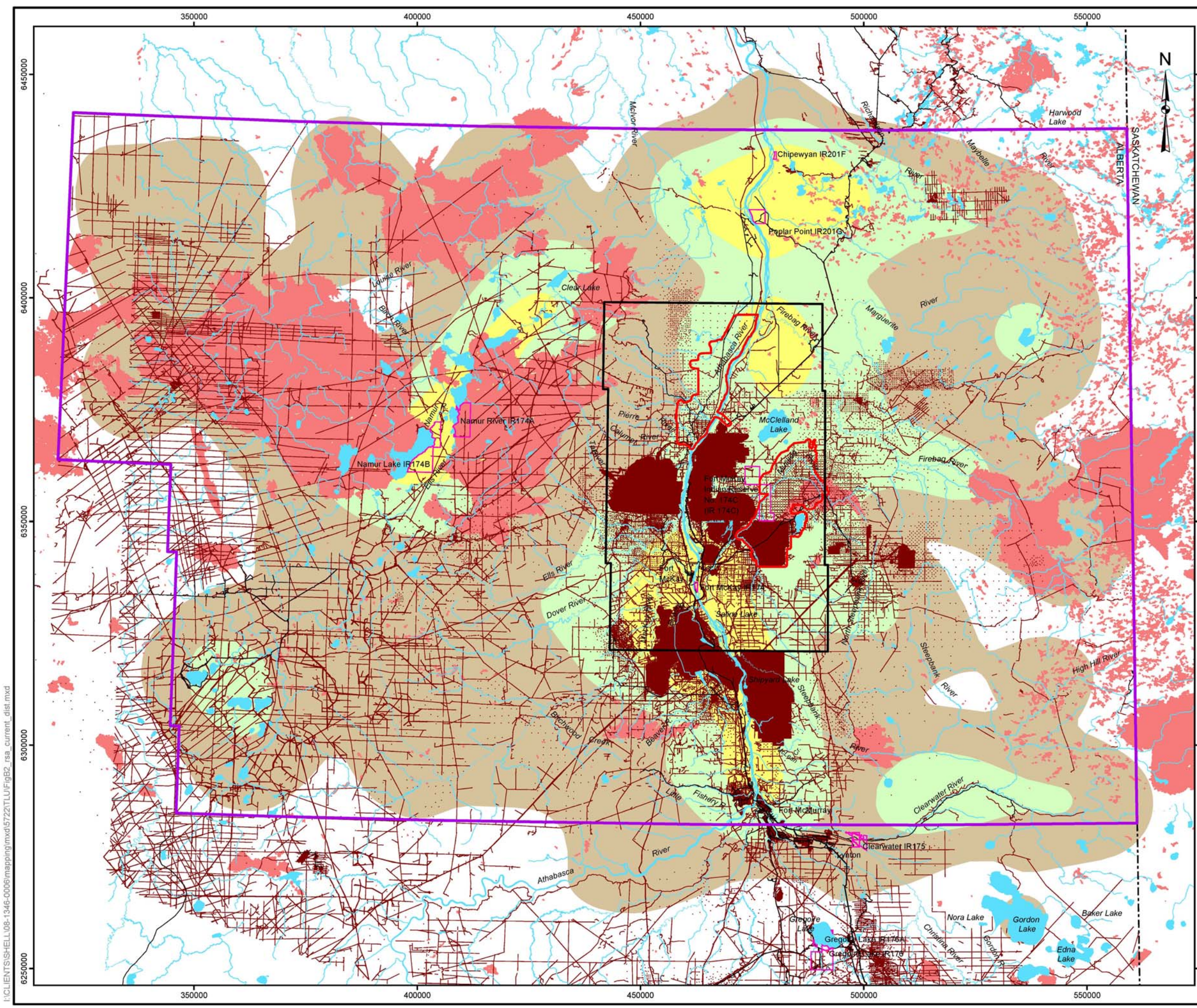
REFERENCE

Alberta digital data obtained from AltaLIS Ltd. (September 2004), IHS Energy Ltd. (August 2006), used under license.
 Projection: UTM Zone 12 Datum: NAD 83



PROJECT	JACKPINE MINE EXPANSION & PIERRE RIVER MINE PROJECT		
TITLE	FORT MCKAY COMMUNITY ASSESSMENT PRE-DEVELOPMENT SCENARIO DISTURBANCES (1955)		
	PROJECT NO. 08-1346-0006.5722	SCALE AS SHOWN	REV. 0
	DESIGN BDW 01 Dec. 2008	Appendix 9-1 Figure 1	
	GIS HR 14 Jan. 2009		
	CHECK AR 14 Jan. 2009		
	REVIEW TC 14 Jan. 2009		

I:\CLIENTS\HELL08-1346-0006\mapping\mxd\5722\TLU\FigB1_rsa_pre-baseline_dist.mxd



LEGEND

- TERRESTRIAL LOCAL STUDY AREA
- FORT MCKAY 40 TOWNSHIP BLOCK
- FORT MCKAY TRADITIONAL USE AREA
- INDIAN RESERVE
- PROVINCIAL BORDER
- OPEN WATER
- PUBLIC ROADWAY
- RAILROAD

CULTURALLY SIGNIFICANT ECOSYSTEMS AREA (ALL USES)

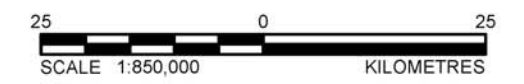
- INTENSE USE CSE (50% UTILIZATION DISTRIBUTION)
- MODERATE USE CSE (75% UTILIZATION DISTRIBUTION)
- LOW USE CSE (95% UTILIZATION DISTRIBUTION)

DISTURBED

- DISTURBANCE
- FIRE
- LINEAR DISTURBANCE

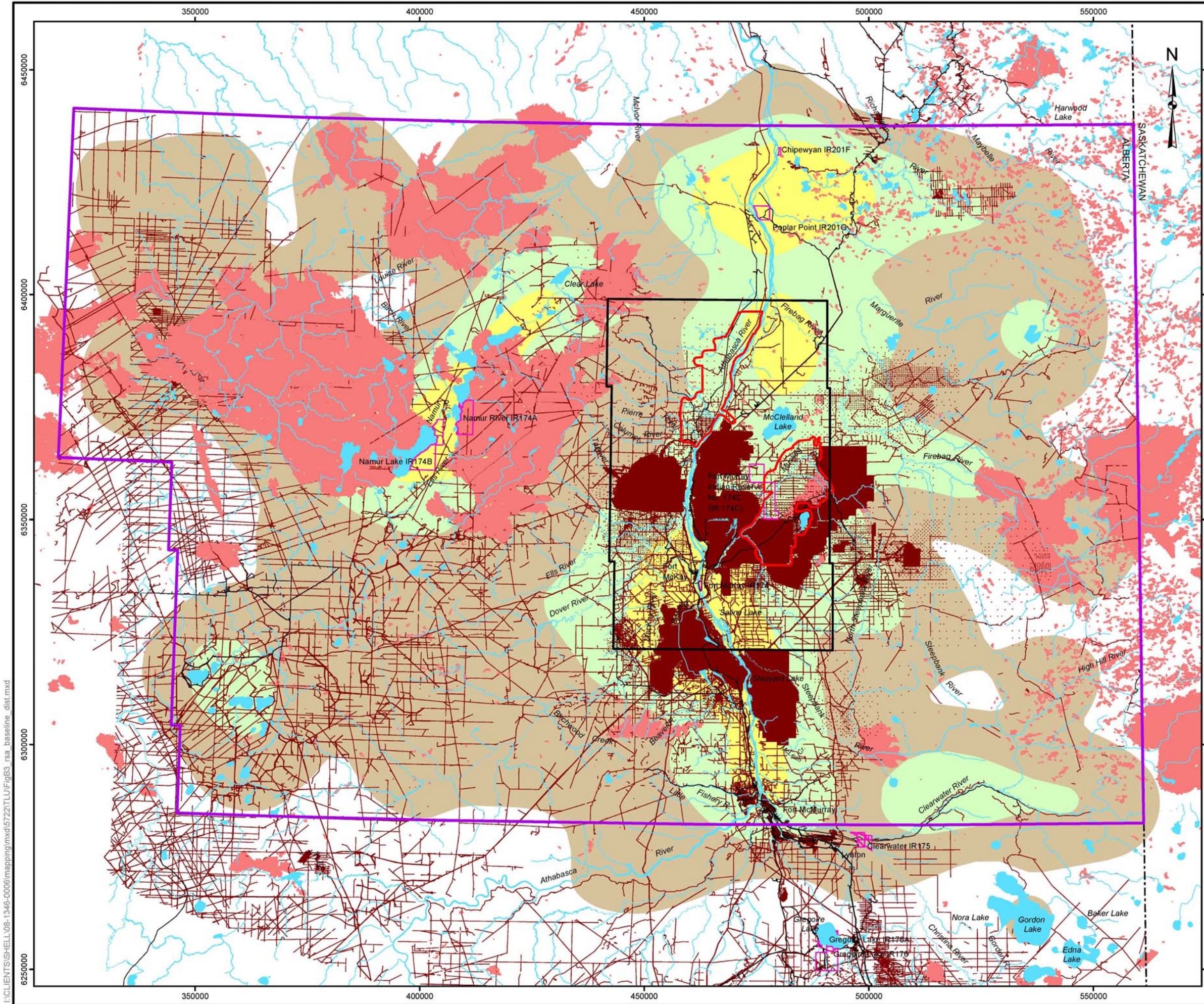
REFERENCE

Alberta digital data obtained from AltaLIS Ltd. (September 2004), IHS Energy Ltd. (August 2006), used under license.
 Projection: UTM Zone 12 Datum: NAD 83



PROJECT	JACKPINE MINE EXPANSION & PIERRE RIVER MINE PROJECT		
TITLE	FORT MCKAY COMMUNITY ASSESSMENT CURRENT SCENARIO DISTURBANCES (2007)		
	PROJECT NO. 08-1346-0006.5722	SCALE AS SHOWN	REV. 0
	DESIGN BDW 01 Dec. 2008	Appendix 9-1 Figure 2	
	GIS HR 14 Jan. 2009		
	CHECK AR 14 Jan. 2009		
	REVIEW TC 14 Jan. 2009		

I:\CLIENTS\HELL08-1346-0006\mapping\mxd\5722\TLU\FigB2_rsa_current_dist.mxd



LEGEND

- TERRESTRIAL LOCAL STUDY AREA
- FORT MCKAY 40 TOWNSHIP BLOCK
- FORT MCKAY TRADITIONAL USE AREA
- INDIAN RESERVE
- PROVINCIAL BORDER
- OPEN WATER
- PUBLIC ROADWAY
- RAILROAD

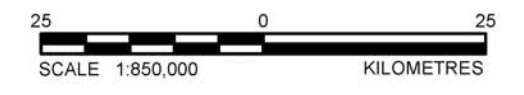
CULTURALLY SIGNIFICANT ECOSYSTEMS AREA (ALL USES)

- INTENSE USE CSE (50% UTILIZATION DISTRIBUTION)
- MODERATE USE CSE (75% UTILIZATION DISTRIBUTION)
- LOW USE CSE (95% UTILIZATION DISTRIBUTION)

DISTURBED

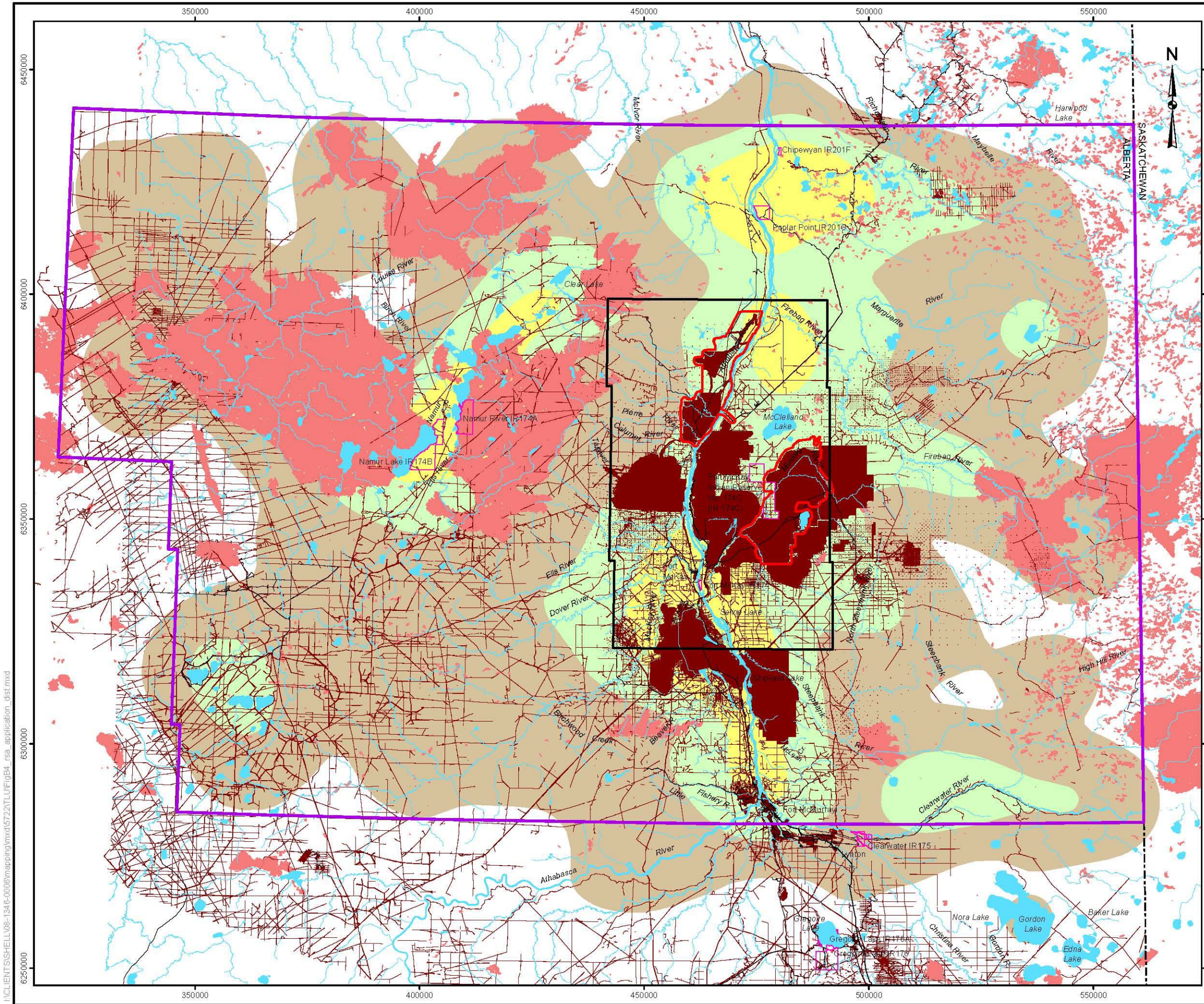
- DISTURBANCE
- FIRE
- LINEAR DISTURBANCE

REFERENCE
 Alberta digital data obtained from AltaLIS Ltd. (September 2004), IHS Energy Ltd. (August 2006), used under license.
 Projection: UTM Zone 12 Datum: NAD 83



PROJECT	JACKPINE MINE EXPANSION & PIERRE RIVER MINE PROJECT		
TITLE	FORT MCKAY COMMUNITY ASSESSMENT BASE CASE DISTURBANCES		
	PROJECT NO. 08-1346-0006.5722	SCALE AS SHOWN	REV. 0
	DESIGN BDW 01 Dec. 2008	Appendix 9-1 Figure 3	
	GIS HR 14 Jan. 2009		
	CHECK AR 14 Jan. 2009		
	REVIEW TC 14 Jan. 2009		

I:\CLIENTS\HELL08-1346-0006\mapping\mxd\5722\TLU\FigB3_rsa_baseline_dist.mxd



LEGEND

- TERRESTRIAL LOCAL STUDY AREA
- FORT MCKAY 40 TOWNSHIP BLOCK
- FORT MCKAY TRADITIONAL USE AREA
- INDIAN RESERVE
- PROVINCIAL BORDER
- OPEN WATER
- PUBLIC ROADWAY
- RAILROAD

CULTURALLY SIGNIFICANT ECOSYSTEMS AREA (ALL USES)

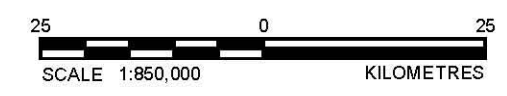
- INTENSE USE CSE (50% UTILIZATION DISTRIBUTION)
- MODERATE USE CSE (75% UTILIZATION DISTRIBUTION)
- LOW USE CSE (95% UTILIZATION DISTRIBUTION)

DISTURBED

- DISTURBANCE
- FIRE
- LINEAR DISTURBANCE

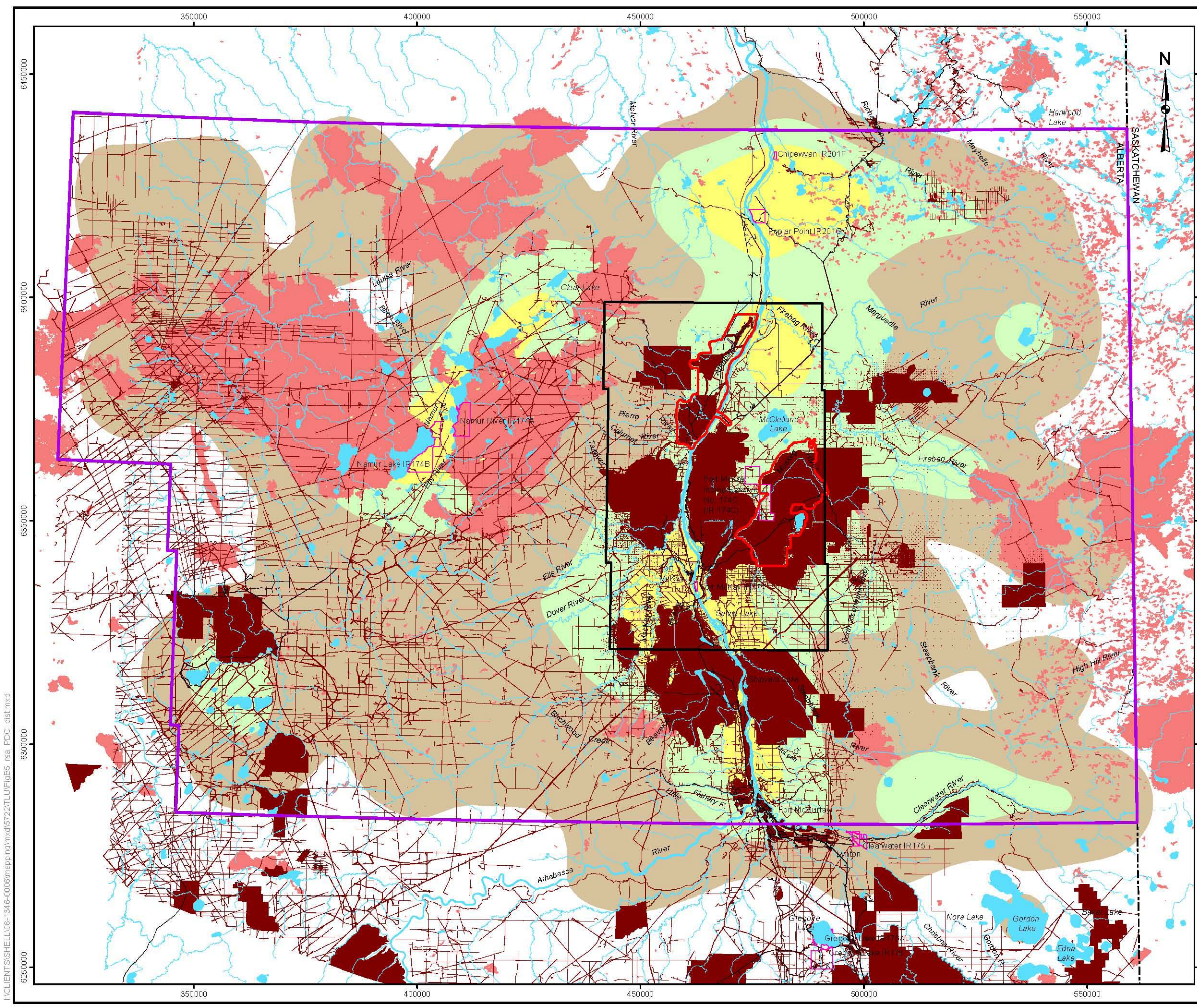
REFERENCE

Alberta digital data obtained from AltaLIS Ltd. (September 2004), IHS Energy Ltd. (August 2006), used under license.
 Projection: UTM Zone 12 Datum: NAD 83



PROJECT	JACKPINE MINE EXPANSION & PIERRE RIVER MINE PROJECT		
TITLE	FORT MCKAY COMMUNITY ASSESSMENT APPLICATION CASE DISTURBANCES		
	PROJECT NO. 08-1346-0006.5722	SCALE AS SHOWN	REV. 0
	DESIGN BDW 01 Dec. 2008	Appendix 9-1 Figure 4	
	GIS HR 14 Jan. 2009		
	CHECK AR 14 Jan. 2009		
	REVIEW TC 14 Jan. 2009		

I:\CLIENT\SS\HELL\08-1346-0006\mapping\mxd\5722\TL\U\FigB4_rsa_application_dist.mxd



LEGEND

- TERRESTRIAL LOCAL STUDY AREA
- FORT MCKAY 40 TOWNSHIP BLOCK
- FORT MCKAY TRADITIONAL USE AREA
- INDIAN RESERVE
- PROVINCIAL BORDER
- OPEN WATER
- PUBLIC ROADWAY
- + RAILROAD

CULTURALLY SIGNIFICANT ECOSYSTEMS AREA (ALL USES)

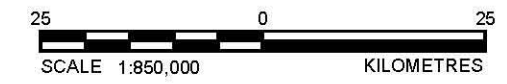
- INTENSE USE CSE (50% UTILIZATION DISTRIBUTION)
- MODERATE USE CSE (75% UTILIZATION DISTRIBUTION)
- LOW USE CSE (95% UTILIZATION DISTRIBUTION)

DISTURBED

- DISTURBANCE
- FIRE
- LINEAR DISTURBANCE

REFERENCE

Alberta digital data obtained from AltaLIS Ltd. (September 2004), IHS Energy Ltd. (August 2006), used under license.
 Projection: UTM Zone 12 Datum: NAD 83



PROJECT	JACKPINE MINE EXPANSION & PIERRE RIVER MINE PROJECT		
TITLE	FORT MCKAY COMMUNITY ASSESSMENT PLANNED DEVELOPMENT CASE DISTURBANCES		
	PROJECT NO. 08-1346-0006.5722	SCALE AS SHOWN	REV. 0
	DESIGN BDW 01 Dec. 2008	Appendix 9-1 Figure 5	
	GIS HR 14 Jan. 2009		
	CHECK AR 14 Jan. 2009		
	REVIEW TC 14 Jan. 2009		

I:\CLIENTS\SH-HELL\08-1346-0006\mapping\mxd\5722\TLUFigB5_rsa_PDC_dist.mxd